

PRODUCTS & SYSTEMS FOR MINING

(All products are SABS Approved)

- Rock and Roof Bolts
- Expansion Shells
- Friction Bolts
- Rock Bolt Accessories
- Mechanical Anchor Bolts
- Nuts, Spanners, Torque Indicators

1. Rock and Roof Bolts

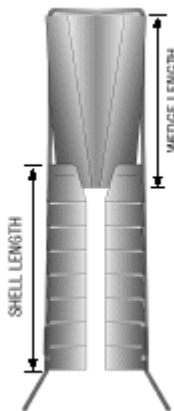
	Yield Strength		Ultimate Tensile Strength		Calculated Shear Strength	Standard Elongation	Uniform Elongation	Mass per Metre	Bar Core Dia	Major Core Dia	Cross Sectional Area
	MPa	kN	MPa	kN							
16mm	500	110	640	130	130	16	8	1671	16	17.4	210 ¹⁾
18mm	500	150	640	210	150	16	8	2140	18	19.8	316 ²⁾
20mm	500	160	640	230	160	16	8	2583	20	21.8	316 ³⁾

Bar straightness to AS 1442-1991; 1) Rolled Thread DIM405-18mm; 2) Rolled Thread DIM405-20mm; 3) Rolled Thread DIM405-22mm



2. Expansion Shells

Physical Properties



Bolt Diameter mm	Thread form	Nominal Hole Dia mm	Shell Length mm	Wedge Length mm	Net Weight kg
16	DIM405-18mm	26	74.5	33,5	0.30
16	DIM405-18mm	30	74.5	33.5	0.37

3. Friction Bolts

	Yield Strength		Ultimate Tensile Strength		Friction Bolt Diameter mm	Hole Diameter Range mm	Mass per Metre kg
	MPa	kN	MPa	kN			
33mm	410	31	520	105	33	33.75 ± 0.74	1.50
39mm	410	26	520	112	39	39.50 ± 0.75	1.75
46mm	410	136	520	152	46	46.00 ± 0.75	2.839



4. Rock Bolt Accessories

RIB Washer for 16 mm Bar - Physical Properties

Bar Specifications

Diameter	Minimum 16 mm +/- 0.03 mm Maximum
RIB Height	Minimum 0.55 mm & Maximum 0.8mm
MPA	Minimum of 500MPA
Bar Yield	Minimum of 100 kN
Ultimate Load	Minimum of 114 kN
Thread Load	110 (+10 mm -0 mm)
NIB Area	Maximum of 10 mm on thread side of bar



Washer Specifications

Washer Dimensions	125 mm x 125 mm
Center Hole	Minimum 18.5 mm & Maximum 19.0 mm
Dog Ear Hole	Minimum 17.5 mm & Maximum 18.0 mm
Deformation	Minimum load of 100 kN
Dog Ear	Safe loading Capacity of 5kN

Nut Specifications

Nut	Nut must not strip at a load less than 140kN
Dimension	27mm across flat
Thread	M18 or DIN 405-18mm

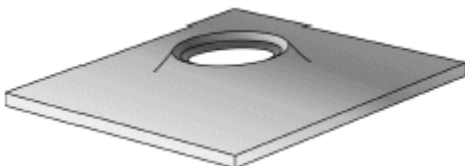
Rectangular Washer 200 x 300mm

General Features

RIB Washer 18.5 – 19 mm and
 22.5 – 23 mm centre holes.

Domed Washer

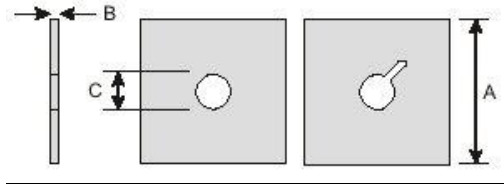
Physical Properties



Length mm	Width mm	Thickness mm
125	125	4.5
125	125	5

Hole size 36, 38, 44, 48mm

Flat Washer



Flat plate – for general use

A/B: 100 x 100 x 4.5 mm

C: 18.5 to 19mm

A/B: 125 x 125 x 4.5 mm

C: 22.5 to 23 mm

Flat Dom Washer with 36, 38, 44, 48mm centre hole.

Grouting Rod

Bar Type	Rebar		
Diameter	12 mm Y12	14 mm	16 mm R16
Length	1.2m – 3.4m	1.2m – 3.4m	1.2m – 3.4m

Forged Head Bolt

Bar Type	DD Bar
Diameter	16 mm/ 18mm/ 20 mm
Length	0.6 – 2.2m

Oslo Straps

Bar Type	Round Steel
Diameter	Horizontal Bars 6-10 mm Strapping Bars 5.5 mm
Length	1-6 mm
Width	.250 – 1m

W Straps

Steel	1.6 mm
Length	1.2 – 4 m
Width	250 – 500 mm
Multi Hole	500 mm APART

Polyfelt 80 x 80 GMF Mine Grid

Physical Properties	Test Method	MARV ^x Values kN/m
Ultimate Tensile Strength machine direction	ISO 10319	80
Ultimate Tensile Cross machine direction	ISO 10319	80
Flame & Electrical Resistance	The material complied with the requirements as per NBC Specification 245:1985 Report No. 2005/616	
Elongation at Characteristic short term Tensile strength %	ISO 10319	11%
Creep limited strength (120yrs)	ISO 13431	55
Aperture Size	Nominal	50x50mm
Weight (Average)	Measured	g/m ² (estimate)

* MARV – Minimum Average Roll Values

The technical values are obtained through testing at Polyfelt's Geosynthetic testing laboratory an ISO/EIC 17025 accredited testing Laboratory for geosynthetics (accreditationno SAMM 207, GAILAP 45-02)

Mechanical Anchor Bolts

Mechanical Anchor Bolt, 32mm

Physical Properties

	Ultimate Tensile Strength kN	Standard Elongation %	Uniform Elongation %	Mass per Meter kg	Bar Diameter mm
32mm	80	16 to 19	12	1.671	16
35mm	80	16 to 19	12	1.671	16



Spanners

- * SA- 27F/22m or 27M/22F
- * SA- 32F/22m or 32M/22F
- * Spanners can be delivered on request



Nuts

- * 18 DIN 405 Drive Nut
- * 20 DIM 405 Drive Nut
- * 22 DIM 405 Drive Nut
- * Nuts can be delivered on request.

Torque Indicators

- * Torque Indicators can be used on 16, 18 and 20mm Anchor Bolts.
- * Torque Indicators are installed between nut and washer. The torque indicator is indication for a correct installed anchor bolt.

MINING PRODUCTS (Continued)

1. ROCK BOLT ASSEMBLIES

BAR OPTIONS			
TYPE	DIAMETER	LENGTH	THREAD
Round bar	14.5mm	0.5mm to 3.0mm	16mm DIN 405
Rebar	25mm	0.5mm to 3.0mm	M24
Aussie bar	16mm	0.5mm to 3.0mm	18mm DIN 405
Step bar	16,18,20mm	0.5mm to 3.0mm	Diameter +2mm DIN 405
High step bar	20mm	0.5mm to 3.0mm	22mm DIN 405
Cat bar-Fully threaded bar	16,20mm	0.5mm to 3.0mm	"Kat" Hot-rolled double-start

BEARING PLATE (WASHER) OPTIONS			
TYPE	SQUARE SIZE	THICKNESS	HOLE SIZE
Flat	100,125,300mm	4.5,5.0,6.0mm	18,19,25,38,40mm
Domed dog ear	120,125,150mm		36,38,40,41,44mm
Ribbed dog ear	120,125,150mm		18,22,23,24,34,36,40,41,44,48mm
Flat dog ear	125mm		18,19,25,38,40mm

EXPANSION SHELL OPTIONS			
TYPE	DIAMETER	HOLE DIAMETER	MAXIMUN BAR DIAMETER
3 Leaf expansion shell	30,32,35mm	Shell+5mm	28 - 30 = 16mm, 32 - 35 = 20mm
	38mm	Shell+7mm	38 = 20mm

NUT OPTIONS				
	KAT BAR	STEP/HIGH STEP	RE-BAR	RE-BAR
	16,20mm	16 - 20mm	16 - 20mm	25mm
NUT TYPES	Ball-nose, Dome	Plain, flange	Plain, flange	Plain, flange
ACCESSORIES	Shearpin, Crimp, Torque indicator, spherical seat, Foskote, Copper insert, Nibbed bar			

2. GROUT RODS

TYPE	DIAMETER	BAR TYPE	OVERLAP	LENGTH
L-Bar	12 - 20mm	Rebar, Aussie bar		1.2 - 1.8m
Shepherd's crook	12 - 20mm	Rebar, Aussie bar	500mm standard	1.2 - 3m

3. FRICTION BOLTS

DIAMETER	LENGTH	HOLE SIZE	WASHER	ACCESSORIES
33,39,42,46mm	0.5 - 3.0m	5mm smaller	Optional	Driver tools

4. CABLE ANCHORS

TYPE	NOMINAL STRENGTH	DOVE PLATE	TENSION DEVICE	ACCESSORIES
Spin Anchor	25t or 35t	150 x 12mm	Barrel and wedge	Jacks, Croppers, Pumps
		200 x 16mm		
Mechanical Anchor	25t or 35t	150 x 12mm	Barrel and wedge	Jacks, Croppers, Pumps
		200 x 16mm		
Truss system	25t or 35t		Double barrel and wedge	Jacks, Croppers, Pumps

5. ROCK RESTRAINING STRAPS

TYPE	WIDTH	LENGTH	THICKNESS	CONFIGURATION
Oslo strap	250, 300mm	1.0,2.4,3.0,4.0,5.0,6.0m	Wire = 8 or 10mm	250 wide = 4 bar, 300wide = 5bar
W strap	300mm	0.60,2.4,5.0m	1.6mm	

6. ACCESSORIES & MISCELLANEOUS PRODUCTS

TYPE	DIAMETER	LENGTH	OPTIONS
Pig tail eyebolt	16mm, 20mm	380 - 1800mm	Expansion shell
Flexible eyebolt round eye or link-lock (Cobra)	16mm	450 - 1000mm	Wedge
Wedge	20mm	350,450,600mm	
Foundation / Winch bolts	16,20,25mm	600 - 2400mm	Nuts
Nut tensioning accessories	Impact wrenches, spinning adaptors and extensions		
Spaceman rock movement indicator (telltale)	Base unit with dial (up to 30mm rock movement) and extension rods		
Weld mesh	A variety of wire gauge and mesh sizes		

7. PRE-STRESSING DEVICES

TYPE	SERIES	DIMENSIONS	MAX EXTENSIONS	OUTER PLATE THICKNESS
Kitspot pot type	SL	150,180,200mm(diameter)	80mm	4mm
	TT		80mm	2 or 2.5mm
	SST		60mm	2mm
	ST		35mm	2mm
Makhulu flat type		240 x 240mm (square)	60mm	2mm

Notes:

Most common configurations and sizes are represented here. Please enquire if there are specific requirements.

All products manufactured to international standards with an ISO 9000 accredited organization

The manufactured is recognized by industry as a leading innovator. Where relevant, products meet or exceed SABS 1408 requirements for “Mechanical components for tendon based rock support systems.”

We offer a comprehensive range of rock reinforcing tendons and accessories, including grout rods, friction anchors, differentiated rock bolts, cable anchors, rock retaining straps and pre-stressing devices including:

- Rock bolt assemblies (resin bar, mechanically anchored bar, fully threaded bar)
- Friction rock anchor assemblies
- Bearing plates (washers – ribbed, domed, flat)
- Grout rods (shepherds crooks, L-bars)
- Cable anchors (mechanical, spin, trusses, installation accessories)
- Rock retaining straps (W-strapping, osro strapping)
- Pigtail eye eyebolts
- Flexible eyebolts and wedges
- Foundation bolts
- Pre-stressing devices (pot or flat profiles and installation accessories)
- Reinforcing weld mesh and galvanized weld mesh

PRICE LIST DIVERS STEEL PRODUCTS **2009**

- REINFORCING MESH
- BRICKMESH
- REINFORCING STEEL
- LIGHTLY GALVANISED WIRE
- WALLTIES
- HARD DRAWN WIRE
- NAILS
- GENERAL PURPOSE MESH
- DPC
- UBM (UNDERSURFACE BED MEMBRANE) GREEN
- LINTELS

Please note the following:

Prices are delivered ex Gauteng, and exclude VAT

Prices are subject to escalation

All purchase orders are accepted and executed subject to our conditions of sales, available on request

Nindensol Sales
Tel: +27 11 781 7677/ 2826
Fax: +27 11 781 7775
Email: sales@nindensol.com
Website: www.nindensol.com

WELDED STEEL FABRIC REINFORCEMENT TO SANS 1024: 2006

Mesh Reference (Ref)	Aperture (mm)	Main wire Diameter (mm)	Cross wire Diameter (mm)	Price/Square Meter (R)	Price/sheet (6x2.4 m) (R)	Price/roll (60x2.4 m) (R)
100	200 x 200	4	4	15.25	219.60	2196.00
133	100 x 200	4	4	20.29	292.14	-
156	100 x 100	3.55	3.55	25.33	342.54	3425.38
193	200 x 200	5.6	5.6	29.44	423.90	4239.00
200	100 x 100	4	4	30.50	439.20	-
245	200 x 200	6.3	6.3	37.36	538.03	-
289	100 x 200	5.6	5.6	44.08	634.68	-
311	200 x 200	7.1	7.1	47.43	682.93	-
395	200 x 200	8	8	60.24	867.43	-
500	200 x 200	9	9	72.28	1040.76	-
617	200 x 200	10	10	88.98	1281.24	-
746	200 x 200	11	11	106.95	1540.08	-
888	200 x 200	12	12	125.44	1806.30	-

ON-STANDARD WELDED STEEL FABRIC REINFORCEMENT TO SANS 1024: 2006

226	100 X 300	5.6	4	35.63	513.00	-
278	100 X 300	6.3	4	43.69	629.10	-
341	100 X 200	6.3	5.6	53.65	772.56	-
433	100 X 200	7.1	6.3	67.71	975.06	-
517	100 X 200	8	6.3	76.89	1107.18	-
655	100 X 200	9	7.1	94.75	1364.40	-
772	100 X 200	10	7.1	111.75	1609.20	-
943	100 X 200	11	8	135.48	1950.84	-
1085	100 X 200	12	8	153.39	2208.85	-

BRICK MESH " A " GRADE - 20 m ROLLS

WIDTH	MAIN WIRE DIA	DIA MASS	CROSS WIRE DIA	PRICE / ROLL (20 m) (R)
230 mm	2.8	2.50	2.8	36.51
150 mm	2.8	2.34	2.8	32.14
110 mm	2.8	2.10	2.8	32.14
75 mm	2.8	2.08	2.8	32.14

BRICK MESH " A " GRADE - 20 m ROLLS

WIDTH	MAIN WIRE DIA	DIA MASS	CROSS WIRE DIA	PRICE / ROLL (20 m) (R)
230 mm	2.8	0.348	2.8	5.5
150 mm	2.8	0.330	2.8	5.05
110 mm	2.8	0.323	2.8	5.05
75 mm	2.8	0.315	2.8	5.05

BRICK MESH " A " GRADE - 20 m ROLLS

WIDTH	MAIN WIRE DIA	DIA MASS	CROSS WIRE DIA	PRICE / ROLL (20 m) (R)
230 mm	2	1.20	2	21.25
150 mm	2	1.04	2	17.71
110 mm	2	1.00	2	17.71
75 mm	2	0.92	2	17.71

BRICK MESH " A " GRADE - 20 m ROLLS

WIDTH	MAIN WIRE DIA	DIA MASS	CROSS WIRE DIA	PRICE / ROLL (20 m) (R)
230 mm	2	0.195	2	3.15
150 mm	2	0.180	2	2.7
110 mm	2	0.173	2	2.7
75 mm	2	0.165	2	2.7

REINFORCING STEEL

WIRE DIA	MASS PER METER	STOCK LENGTHS PRICE/TON (R)	PRICE PER 6m (R)	PRICE PER 6.5 m (R)
R 6	0.222	12250	16.31	17.68
R 8	0.395	12250	29.04	31.45
R 10	0.617	12250	45.35	49.13
R 12	0.888	12250	65.26	70.71
R 16	1.580	12250	116.13	125.81
R 20	2.470	12087.5	179.14	194.06
R 25	3.850	12087.5	279.23	302.50
Y 6	0.222	12250	16.31	17.68
Y 8	0.395	12250	29.04	31.45
Y 10	0.617	12250	45.35	49.13
Y 12	0.888	12250	65.26	70.71
Y 16	1.580	12250	116.13	125.81
Y 20	2.470	12087.5	179.14	194.06
Y 25	3.850	12087.5	279.23	302.50
Y 32	6.310	12087.5	457.64	496.08
Y 40	9.860	12087.5	715.10	775.17

REINFORCING STEEL VARIOUS STRAIGHT & CUT LENGTHS

Y8 TO Y16 = R13 125.00 / TON

R8 TO R16 = R13 125.00 / TON

HARD DRAWN WIRE

SIZE	COILS (R)	STRAIGHT & CUT (R)
12.00 mm	13 750.00	14 750.00
10.00 mm	13 750.00	14 750.00
8.88 mm	13 750.00	14 750.00
7.10 mm	13 750.00	14 750.00
6.30 mm	13 750.00	14 750.00
5.60 mm	13 750.00	14 750.00
5.20 mm	13 750.00	14 750.00
5.00 mm	13 750.00	14 750.00
4.50 mm	13 750.00	14 750.00
4.00 mm	13 750.00	14 750.00
3.55 mm	13 750.00	14 750.00
3.15 mm	13 750.00	14 750.00
2.50 mm	13 750.00	14 750.00
2.00 mm	13 750.00	14 750.00

PRE GALVANIZED WIRE IN COIL

DIA	50 KG COILS (R)	5 KG COILS (R)	2 KG COILS (R)
4.00 mm	850	85	35
3.15 mm	850	85	35
2.50 mm	975	97.5	40
2.00 mm	975	97.5	40
1.60 mm	1037.5	103.75	42.5
DIA	50 KG LENGTH / COIL	5 KG LENGTH / COIL	2 KG LENGTH / COIL
4.00 mm	500 m	50 m	20 m
3.15 mm	810 m	80 m	33 m
2.50 mm	1300 m	130 m	51 m
2.00 mm	2015 m	200 m	80 m
1.60 mm	3175 m	315 m	125 m

BLACK ANNEALED WIRE

DIA	50 KG COILS (R)	5 KG COILS (R)	2 KG COILS (R)
1.60 mm	818.75	81.25	33.75

Note: We supply too 2, 2.5, 3.15 and 4.00mm black annealed wire in 50kg coil

BUTTERFLY (PWD) WALL TIES

DIA	LENGTH	PRICE (R)	NR / BUNDLE
2.50 mm	9 inch	76.25	25
3.15 mm	9 inch	84.76	25
2.50 mm	11 inch	91.13	25
3.15 mm	11 inch	99.60	25

ROUND WIRE NAILS

SIZE	25 KG CARTONS (R)	1 KG PREPACK (R)
150 mm x 5.16 mm	366.25	15
125 mm x 5.00 mm	366.25	15
100 mm x 4.00 mm	366.25	15
75 mm x 3.55 mm	366.25	15
63 mm x 3.15 mm	543.75	22.5
50 mm x 2.65 mm	597.50	23.75
32 mm x 2.00 mm	802.50	32.5
25 mm x 1.60 mm	937.50	38.75

STEEL CUT NAILS

SIZE	25 KG CARTONS (R)	1 KG PREPACK (R)
75 mm	1082.50	42.50
65 mm	1082.50	42.50
50 mm	1106.25	43.75
40 mm	1106.25	43.75

PANEL PINS

SIZE	25 KG CARTONS (R)	1 KG PREPACK (R)
50 mm x 2.00 mm	666.25	27.50
40 mm x 1.60 mm	802.50	32.50
32 mm x 1.60 mm	937.50	38.75
25 mm x 1.60 mm	1211.25	48.75
16 mm x 1.40 mm	2708.75	108.75
13 mm x 1.40 mm	2708.75	108.75

STAPLES

SIZE	25 KG CARTONS (R)	1 KG PREPACK (R)
13 mm x 1.60 mm	1226.25	48.75
16 mm x 2.00 mm	1090.00	43.75
20 mm x 2.00 mm	953.75	38.75
25 mm x 2.50 mm	817.5	32.5
32 mm x 3.15 mm	408.75	16.25
40 mm x 4.00 mm	408.75	16.25
50 mm x 4.00 mm	408.75	16.25

ELECTRO GALVANIZED CLOUTS

SIZE	25 KG CARTONS (R)	1 KG PREPACK (R)
40 mm x 2.65 mm	817.50	32.50
32 mm x 2.65 mm	817.50	32.50
25 mm x 2.50 mm	953.75	38.75

PLAIN CLOUTS

SIZE	25 KG CARTONS (R)	1 KG PREPACK (R)
40 mm x 2.65 mm	530.00	21.25
32 mm x 2.65 mm	530.00	21.25
25 mm x 2.50 mm	597.50	25.00

ELECTRO GALVANIZED SEMI CLOUTS

SIZE	25 KG CARTONS (R)	1 KG PREPACK (R)
40 mm x 2.00 mm	953.75	38.75
32 mm x 2.00 mm	1021.25	41.25
25 mm x 2.00 mm	1090.00	43.75

PLAIN SEMI CLOUTS

SIZE	25 KG CARTONS (R)	1 KG PREPACK (R)
40 mm x 2.00 mm	530.00	21.25
32 mm x 2.00 mm	530.00	21.25
25 mm x 2.00 mm	597.50	25.00

GENERAL PURPOSE MESH

General Purpose Mesh is manufactured in standard sheets of 1200 mm x 2400 mm. Available in galvanized wire and black high tensile cold drawn smooth wires.

General Purpose Mesh offers a wide variety of uses, covering everything from the average household to heavy industries.

Typical applications are:

Partitioning	Enclosures	Window Guards
Shelving	Security Cages	Machine Guards
Racking Safety Carriers	Animal Pens & Cages	Ventilator Guards
Stairways	Catwalks	Fire Guards
Balustrades	Poultry Pens	Grading Screens
Pallets	Cable Trays	Garden Protection
Display Work	Storage Lockers	
Crates for packing and material handling		
Trays for spillages for factories and industrial applications		

MESH REF	APERTURES	WIRE DIA	SHEET SIZE	MASS KG	PRICE PER SHEET (R)
GP 379		3.16	2.4 X 1.2	11	395.00
GP 613	50 X 25	4.00	2.4 X 1.2	18	618.75
GP 946		5.00	2.4 X 1.2	27	953.75
GP 256		3.16	2.4 X 1.2	7	258.75
GP 413	50 X 50	4.00	2.4 X 1.2	12	421.25
GP 635		5.00	2.4 X 1.2	18	643.75
GP 169		3.16	2.4 X 1.2	5	173.75
GP 279	75 X 75	4.00	2.4 X 1.2	8	282.50
GP 429		5.00	2.4 X 1.2	13	462.50
GP 190		3.16	2.4 X 1.2	6	215.00
GP 313	100 X 50	4.00	2.4 X 1.2	9	317.50
GP 481		5.00	2.4 X 1.2	14	493.75
GP 126		3.16	2.4 X 1.2	4	142.50
GP 212	100 X 100	4.00	2.4 X 1.2	6	220.00
GP 327		5.00	2.4 X 1.2	9	333.75

Galvanized coating available*

FULLY THREADED RODS

SIZE (mm)	1 m BLACK PRICE (R)	1 m E/GALV PRICE (R)	3 m BLACK PRICE (R)	3 m E/GALV PRICE (R)
M 4	4.45	6.10	-	-
M 5	4.54	6.10	13.75	17.20
M 6	4.15	5.48	12.19	15.64
M 8	5.79	7.81	17.15	25.00
M 10	8.44	12.35	25.64	37.50
M 12	11.96	17.20	35.96	54.73
M 14	32.21	42.21	96.94	125.00
M 16	25.48	35.96	76.61	109.45
M 18	43.94	57.85	132.74	-
M 20	39.65	54.73	118.75	156.25
M 22	65.38	92.25	193.88	-
M 24	60.00	78.18	179.80	250.16
M 27	93.75	125.00	281.43	-
M 30	118.75	156.25	358.04	469.05
M 33	190.75	250.16	572.24	-
M 36	193.75	265.00	584.75	781.75
M 39	311.14	422.15	936.54	1250.80
M 42	323.65	437.78	969.38	1172.63
M 45	414.33	483.13	1247.68	-
M 48	453.41	625.00	1360.25	-
M 52	551.95	750.00	1657.31	-
M 64	780.19	1094.45	2329.61	-

**FOUNDATION BOLTS
 L - SHAPE BOLTS ONLY
 MILD STEEL BLACK**

SIZE	LONG LEG	SHORT LEG	THREAD	PRICE / EACH
M 16	300 X	100	100	27.08
M 16	400 X	100	100	31.08
M 16	500 X	100	100	35.15
M 16	600 X	100	100	39.18

M 20	400 X	100	100	42.64
M 20	500 X	100	100	50.73
M 20	600 X	100	100	60.63
M 20	800 X	100	100	85.00

M 24	600 X	150	100	93.95
M 24	800 X	150	100	121.01
M 24	1000 X	150	100	150.53

DPC	
SIZE	(R)
375um x 110 mm x 40m	56.92
375um x 225 mm x 40m	116.42

UBM (Under surface Bed Membrane) Green	
SIZE	(R)
250um x 3 m x 30m	686.37
250um x 4 m x 30m	915.16
250um x 6 m x 30m	1372.84

LINTELS

Length	Unit price 110mm (75mm Width)	Unit Price 140mm (90mm Width)
900mm	R 19.45	R 25.12
1200mm	R 24.10	R 31.66
1500mm	R 28.75	R 38.20
1800mm	R 33.40	R 44.74
2100mm	R 38.05	R 51.28
2400mm	R 42.70	R 57.82
2700mm	R 47.35	R 64.36
3000mm	R 52.00	R 70.90
3300mm	R 56.65	R 77.44
3600mm	R 61.30	R 83.98
3900mm	R 65.95	R 90.52
4200mm	R 70.60	R 97.06
4500mm	R 75.25	R 103.60
4800mm	R 79.90	R 110.14
5100mm	R 84.55	R 116.68
5400mm	R 89.20	R 123.22
5700mm	R 93.85	R 129.76
6000mm	R 98.50	R 136.30
6300mm	R 103.25	R 150.40
6600mm	R 107.80	R 157.30

FOR MORE OF OUR PRODUCTS, VISIT OUR WEBSITE AT WWW.NINDENSOL.COM